

STRADA DIHORULUI

TEREN NC 234236

ACCES  
AUTO

GENERATOR

5 LOCURI  
PARCARE LA SOL

17

16

15

14

13

CORP C5  
8 locuinte insiruite  
P+1E+Pod

CORP C4  
13 locuinte insiruite  
P+1E+Pod

CALE ACCES

69 LOCURI DE PARCARE  
LA SOL

CORP C1  
10 locuinte insiruite  
P+1E+Pod

CORP C2  
11 locuinte insiruite  
P+1E+Pod

CORP C3  
16 locuinte insiruite  
P+1E+Pod



Corp C1 - 10 locuinte insiruite P+1E+Pod  
S. construita = 457.33mp  
S. construita proiectie = 587.34mp  
S. construita desfasurata = 979.97mp  
POT = 6.54%; CUT = 0.11  
9 locuinte cu S.C.D < 100mp  
1 locuinta cu S.C.D > 100mp

Corp C2 - 11 locuinte insiruite P+1E+Pod  
S. construita = 497.01mp  
S. construita proiectie = 641.69mp  
S. construita desfasurata = 1067.58mp  
11 locuinte cu S.C.D < 100mp  
POT = 7.15%; CUT = 0.12

Corp C3 - 16 locuinte insiruite P+1E+Pod  
S. construita = 725mp  
S. construita proiectie = 934.19mp  
S. construita desfasurata = 1556.11mp  
16 locuinte cu S.C.D < 100mp  
POT = 8.44%; CUT = 0.14

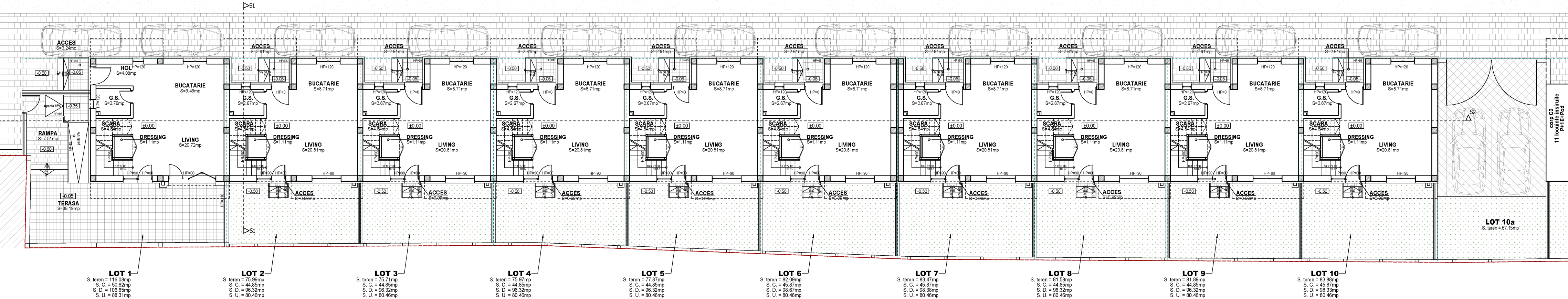
Corp C4 - 13 locuinte insiruite P+1E+Pod  
S. construita = 586.71mp  
S. construita proiectie = 757.42mp  
S. construita desfasurata = 1260.22mp  
13 locuinte cu S.C.D < 100mp  
POT = 8.44%; CUT = 0.14

Corp C5 - 13 locuinte insiruite P+1E+Pod  
S. construita = 362.46mp  
S. construita proiectie = 468.09mp  
S. construita desfasurata = 778.62mp  
8 locuinte cu S.C.D < 100mp  
POT = 5.21%; CUT = 0.09

Telefon: +40 733 890 132  
Adresa: Bucuresti, Intrarea Dihorului nr 36  
Email: office@rimresidence.ro  
Website: www.rimresidence.ro

# CORP C1

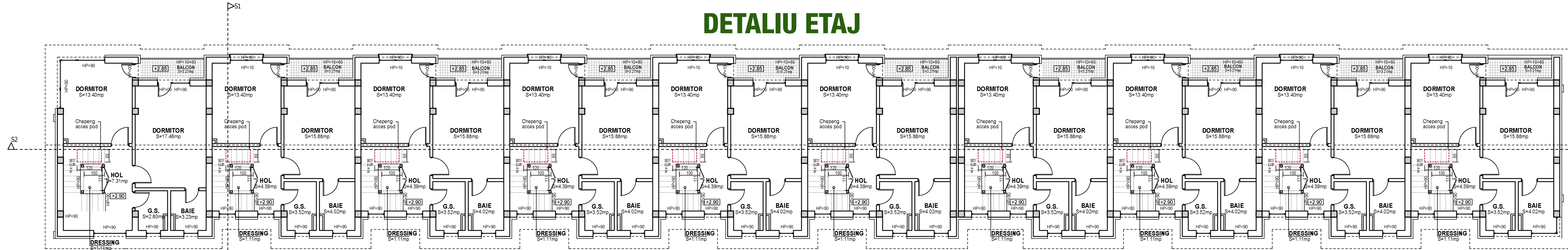
## DETALIU PARTER



Corp C1 - 10 locuinte insiruite P+1E+Pod  
 S. construita = 457.33mp  
 S. construita proiectie = 587.34mp  
 S. construita defasurata = 979.97mp  
 POT = 6.54%; CUT = 0.11  
 9 locuinte cu S.C.D < 100mp  
 1 locuinta cu S.C.D > 100mp

Telefon: +40 733 890 132  
 Adresa: Bucuresti, Intrarea Dihorului nr 36  
 Email: office@rimresidence.ro  
 Website: www.rimresidence.ro

# CORP C1 DETALIU ETAJ



**LOT 1**  
S. teren = 116.08mp  
S. C. = 50.62mp  
S. D. = 106.65mp  
S. U. = 88.31mp

**LOT 2**  
S. teren = 75.99mp  
S. C. = 44.85mp  
S. D. = 96.32mp  
S. U. = 80.46mp

**LOT 3**  
S. teren = 75.71mp  
S. C. = 44.85mp  
S. D. = 96.32mp  
S. U. = 80.46mp

**LOT 4**  
S. teren = 75.97mp  
S. C. = 44.85mp  
S. D. = 96.32mp  
S. U. = 80.46mp

**LOT 5**  
S. teren = 77.87mp  
S. C. = 44.85mp  
S. D. = 96.32mp  
S. U. = 80.46mp

**LOT 6**  
S. teren = 82.09mp  
S. C. = 45.87mp  
S. D. = 98.67mp  
S. U. = 80.46mp

**LOT 7**  
S. teren = 83.47mp  
S. C. = 45.87mp  
S. D. = 98.38mp  
S. U. = 80.46mp

**LOT 8**  
S. teren = 81.58mp  
S. C. = 44.85mp  
S. D. = 96.32mp  
S. U. = 80.46mp

**LOT 9**  
S. teren = 81.89mp  
S. C. = 44.85mp  
S. D. = 96.32mp  
S. U. = 80.46mp

**LOT 10**  
S. teren = 83.88mp  
S. C. = 45.87mp  
S. D. = 98.33mp  
S. U. = 80.46mp

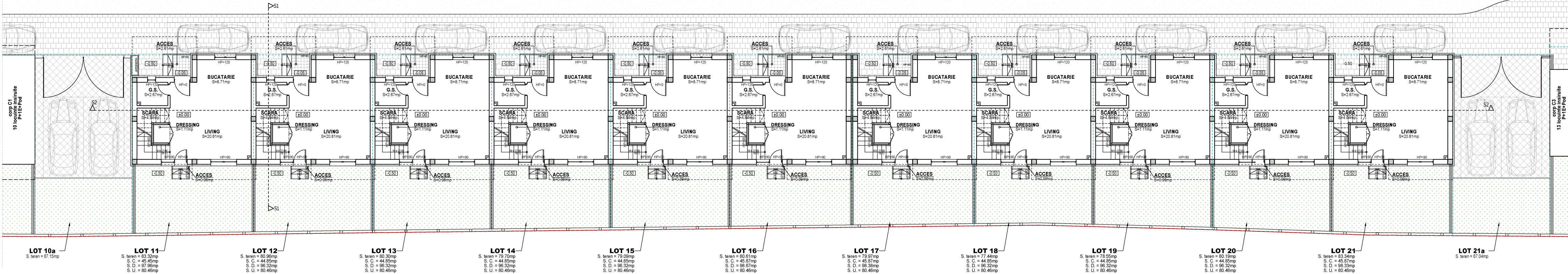


**Corp C1 - 10 locuinte insiruite P+1E+Pod**  
 S. construita = 457.33mp  
 S. construita proiectie = 587.34mp  
 S. construita defasurata = 979.97mp  
 POT = 6.54%; CUT = 0.11  
 9 locuinte cu S.C.D < 100mp  
 1 locuinta cu S.C.D > 100mp

Telefon: +40 733 890 132  
 Adresa: Bucuresti, Intrarea Dihorului nr 36  
 Email: office@rimresidence.ro  
 Website: www.rimresidence.ro

# CORP C2

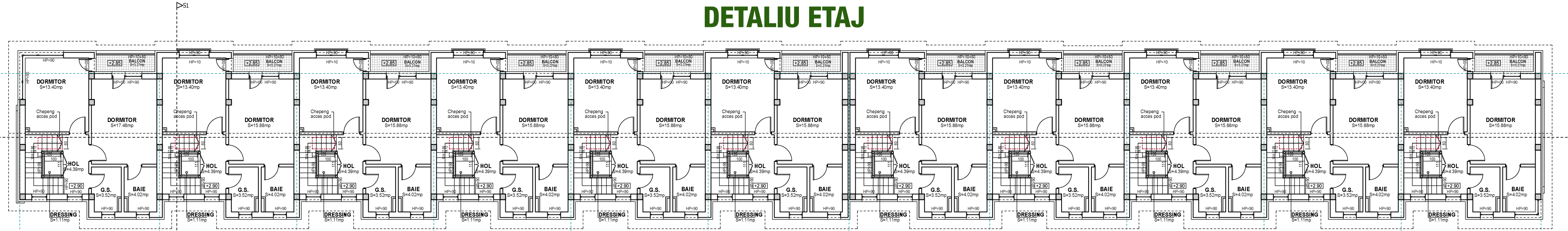
## DETALIU PARTER



Corp C2 - 11 locuinte insiruite P+1E+Pod  
 S. construita = 497.01mp  
 S. construita proiectie = 641.69mp  
 S. construita desfasurata = 1067.58mp  
 11 locuinte cu S.C.D < 100mp  
 POT = 7.15%; CUT = 0.12

Telefon: +40 733 890 132  
 Adresa: Bucuresti, Intrarea Dihorului nr 36  
 Email: office@rimresidence.ro  
 Website: www.rimresidence.ro

# CORP C2 DETALIU ETAJ



**LOT 11**  
S. teren = 83.32mp  
S. C. = 45.45mp  
S. D. = 97.96mp  
S. U. = 80.46mp

**LOT 12**  
S. teren = 80.96mp  
S. C. = 44.85mp  
S. D. = 96.32mp  
S. U. = 80.46mp

**LOT 13**  
S. teren = 80.30mp  
S. C. = 44.85mp  
S. D. = 96.32mp  
S. U. = 80.46mp

**LOT 14**  
S. teren = 79.70mp  
S. C. = 44.85mp  
S. D. = 96.32mp  
S. U. = 80.46mp

**LOT 15**  
S. teren = 79.09mp  
S. C. = 44.85mp  
S. D. = 96.32mp  
S. U. = 80.46mp

**LOT 16**  
S. teren = 79.09mp  
S. C. = 45.87mp  
S. D. = 98.67mp  
S. U. = 80.46mp

**LOT 17**  
S. teren = 79.97mp  
S. C. = 45.87mp  
S. D. = 98.38mp  
S. U. = 80.46mp

**LOT 18**  
S. teren = 77.44mp  
S. C. = 44.85mp  
S. D. = 96.32mp  
S. U. = 80.46mp

**LOT 19**  
S. teren = 80.19mp  
S. C. = 44.85mp  
S. D. = 96.32mp  
S. U. = 80.46mp

**LOT 20**  
S. teren = 83.34mp  
S. C. = 45.87mp  
S. D. = 98.33mp  
S. U. = 80.46mp

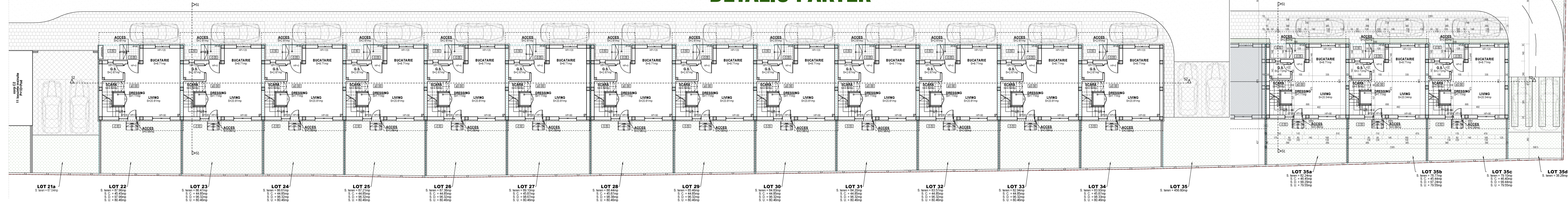
**LOT 21a**  
S. teren = 67.04mp



**Corp C2 - 11 locuinte insiruite P+1E+Pod**  
S. construita = 497.01mp  
S. construita proiectie = 641.69mp  
S. construita desfasurata = 1067.58mp  
11 locuinte cu S.C.D < 100mp  
POT = 7.15%; CUT = 0.12

Telefon: +40 733 890 132  
Adresa: Bucuresti, Intrarea Dihorului nr 36  
Email: office@rimresidence.ro  
Website: www.rimresidence.ro

# CORP C3 DETALIU PARTER

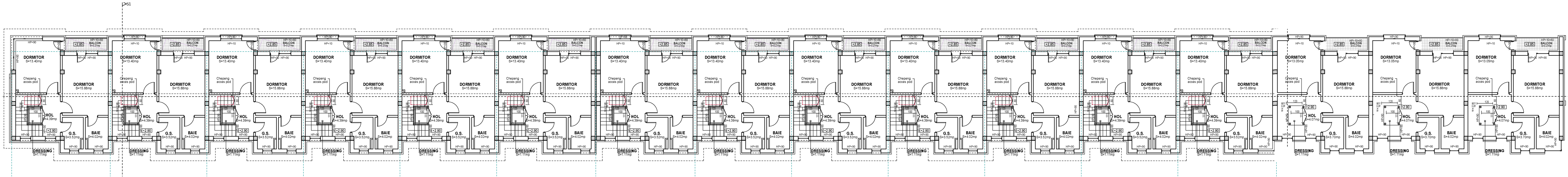


Corp C3 - 16 locuinte insiruite P+1E+Pod  
 S. construita = 725mp  
 S. construita proiectie = 934.19mp  
 S. construita defasurata = 1556.11mp  
 16 locuinte cu S.C.D < 100mp  
 POT = 8.44%; CUT = 0.14



Telefon: +40 733 890 132  
 Adresa: Bucuresti, Intrarea Dihorului nr 36  
 Email: office@rimresidence.ro  
 Website: www.rimresidence.ro

# CORP C3 DETALIU ETAJ



Corp C3 - 16 locuinte insiruite P+1E+Pod

S. construita = 725mp

S. construita proiectie = 934.19mp

S. construita defasurata = 1556.11mp

16 locuinte cu S.C.D < 100mp

POT = 8.44%; CUT = 0.14



Telefon: +40 733 890 132

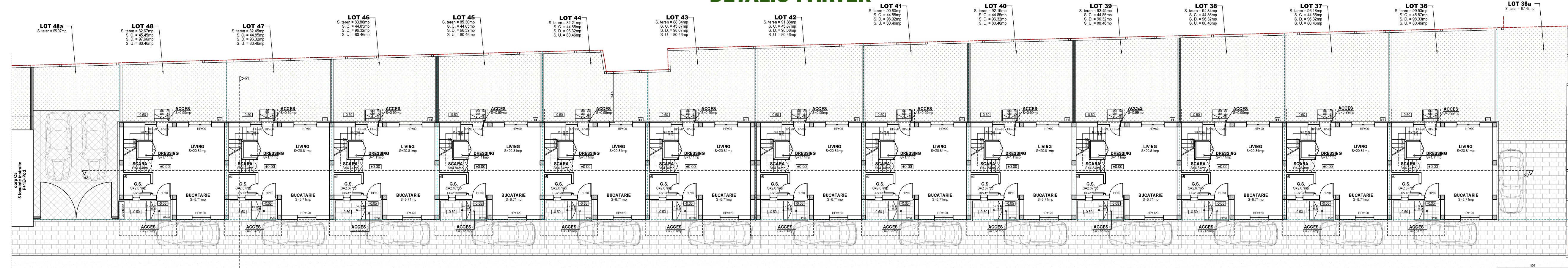
Adresa: Bucuresti, Intrarea Dihorului nr 36

Email: office@rimresidence.ro

Website: www.rimresidence.ro

# CORP C4

## DETALIU PARTER



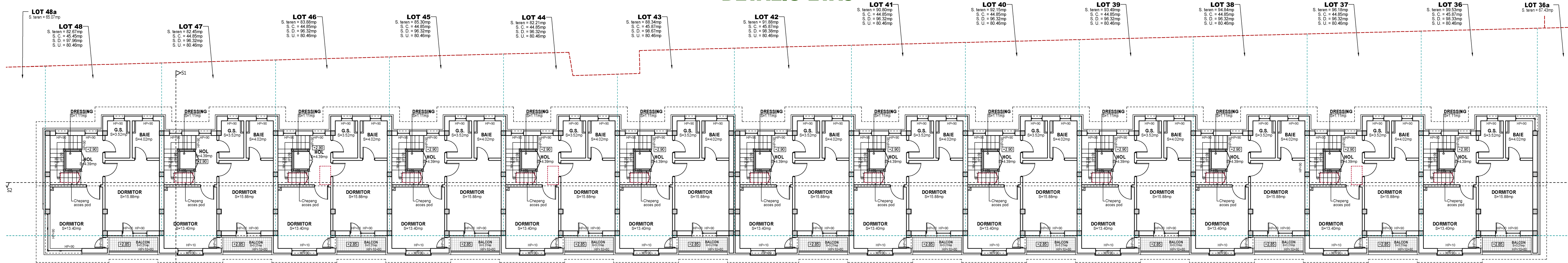
Corp C4 - 13 locuinte insiruite P+1E+Pod  
 S. construita = 586.71mp  
 S. construita proiectie = 757.42mp  
 S. construita defasurata = 1260.22mp  
 13 locuinte cu S.C.D < 100mp  
 POT = 8.44%; CUT = 0.14

Telefon: +40 733 890 132  
 Adresa: Bucuresti, Intrarea Dihorului nr 36  
 Email: office@rimresidence.ro  
 Website: www.rimresidence.ro



# CORP C4

## DETALIU ETAJ

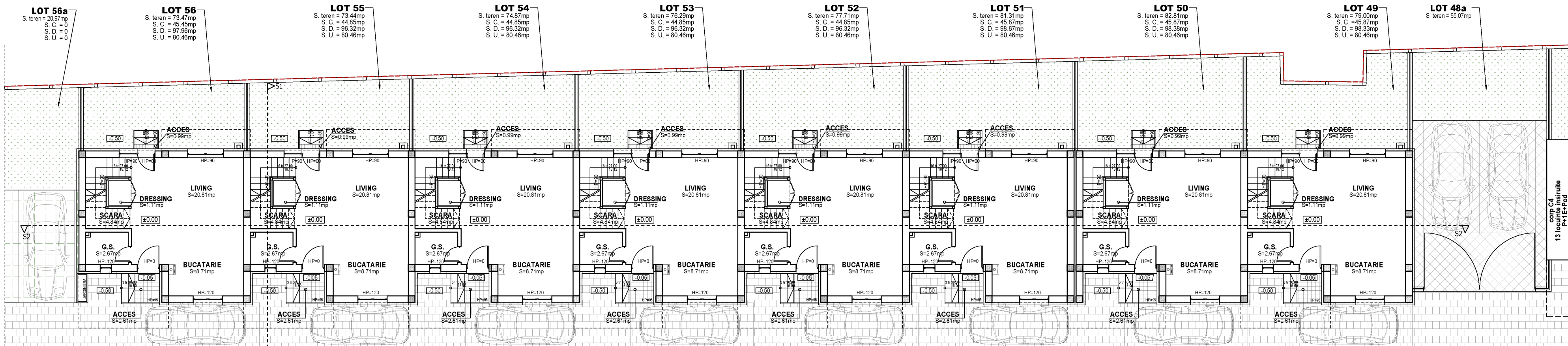


**Corp C4 - 13 locuinte insiruite P+1E+Pod**  
 S. construita = 586.71mp  
 S. construita proiectie = 757.42mp  
 S. construita defasurata = 1260.22mp  
 13 locuinte cu S.C.D < 100mp  
 POT = 8.44%; CUT = 0.14

Telefon: +40 733 890 132  
 Adresa: Bucuresti, Intrarea Dihorului nr 36  
 Email: office@rimresidence.ro  
 Website: www.rimresidence.ro

# CORP C5

## DETALIU PARTER

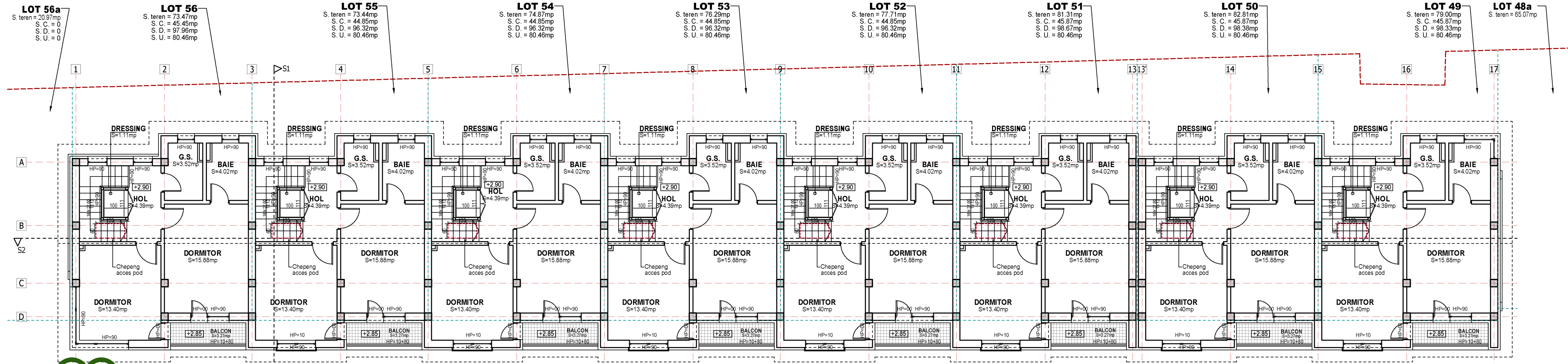


Corp C4 - 13 locuinte insiruite P+1E+Pod  
 S. construita = 586.71mp  
 S. construita proiectie = 757.42mp  
 S. construita desfasurata = 1260.22mp  
 13 locuinte cu S.C.D < 100mp  
 POT = 8.44%; CUT = 0.14

Telefon: +40 733 890 132  
 Adresa: Bucuresti, Intrarea Dihorului nr 36  
 Email: office@rimresidence.ro  
 Website: www.rimresidence.ro

# CORP C5

## DETALIU PARTER



**Corp C4 - 13 locuinte insiruite P+1E+Pod**

S. construita = 586.71mp  
 S. construita proiectie = 757.42mp  
 S. construita desfasurata = 1260.22mp  
 13 locuinte cu S.C.D < 100mp  
 POT = 8.44%; CUT = 0.14

Telefon: +40 733 890 132  
 Adresa: Bucuresti, Intrarea Dihorului nr 36  
 Email: office@rimresidence.ro  
 Website: www.rimresidence.ro